

# Rent a house for 6 people in Autoire (Lot) for your holidays

# Rent a house for 6 people in Autoire (Lot) for your holidays



occupied

<b>Season</b>	<b>Date (Minimum of 2 nights)</b>	<b>Rate weekly</b>
<b>Low season</b>	From September 27th till October 17th and from November 1st till December 19th	€300
<b>Mid season</b>	From April 12th till July 4th, August 30th till September 26th, October 18th till October 31st, December 20th till January 2nd	€360
<b>High season</b>	From 5 till 11 July and August 23rd till August 29th	€490
<b>Très hte saison</b>	From July 12th till August 22nd	€520
Weekend 3 days and 2 nights from the 1st day 4p.m till the 3rd day 4p.m : €150		

Season	Date (Minimum of 2 nights)	Rate weekly
Additional costs : heating in the meter, arrange €48, rent of linen of bed and dress		

*Calm Area - Box tree cut - Raised Park - Love of the garden*

- » 130 m<sup>2</sup> on 3 floors, all comfort, entirely restored
- » Ground floor : living dining room, old fireplace, cooks, bathroom, toilets
- » 1st floor : bedroom, complete bathroom, toilets and corner dress
- » 2nd floor : 2 mansard-roofed small bedrooms, bathrooms + toilets
  
- » 1 fully-equipped kitchen (dishwasher, washing machine)
- » 3 complete bathrooms (3 showers, 3 bathtubs), 3 WC, 1 by floor
- » Old fireplace, beams, painted ceilings
- » 3 floors, 3 rooms
- » 1 bed 160, 1 bed 140, 2 beds 90, 1 sofa bed 140
- » Privative terrace decorated with flowers within a beautiful park. Exposure is in the South. Car park in the street, 20 meters - Very big private meadow on the other side of the alley
- » Sheets and bathroom linen in addition; utilities included, , except electric heating moreover, if necessary.

Near St Céré or Bretenoux at 7km approximately

- 6 people
- 130m<sup>2</sup>
- 3 bathrooms
- Washing machine, dishwasher
- Internet

NEW PICTURES >>> CLIC ON THE FRENCH DESCRIPTIONS (FAMILIALE and COUPLE)

[Contact the host](#)

[+33 6 66 33 90 60](tel:+33666339060)



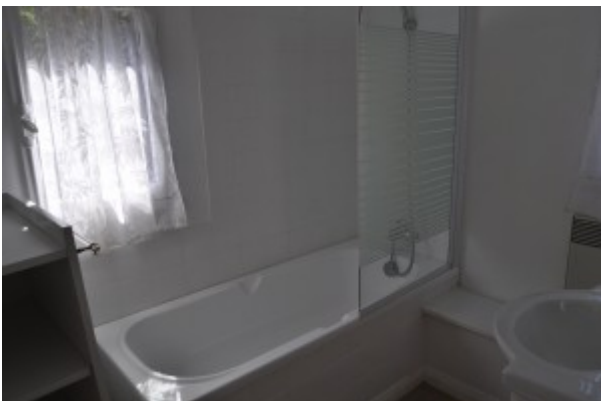
Plafond Grande Chambre doré à la main



Entrée



Grande Grille

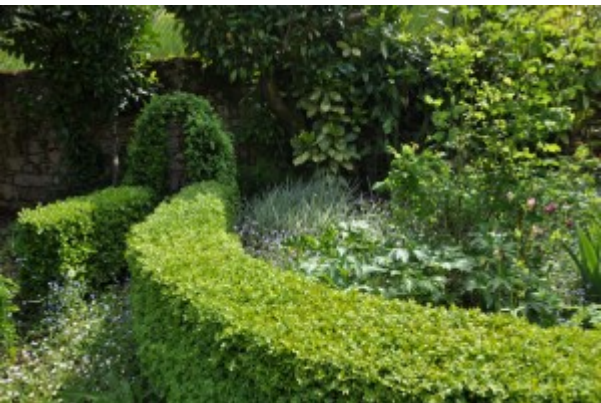




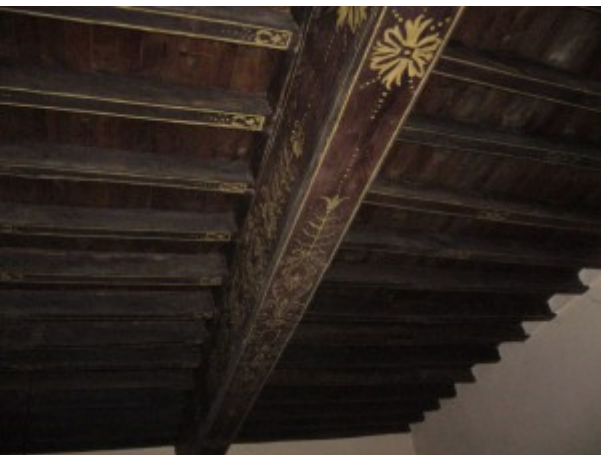
Cour-jardin



Grande Chambre



Buis



Grande Chambre



Entrée



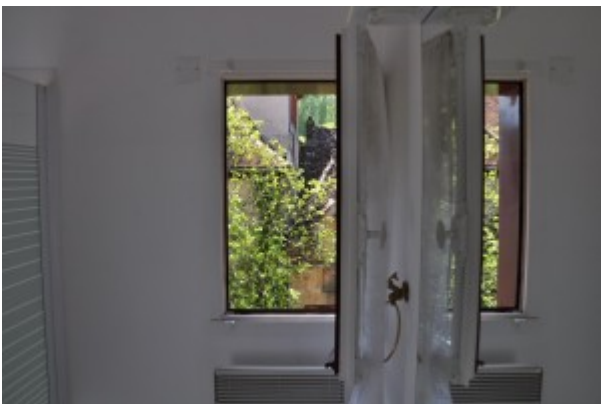
Entrée



Jardin



Escalier



Salle de bain n°2



Cour-jardin



Entrée



Chambre 2 lits simples



Salle de bain n°3



Vue du village depuis la Chambre



La maison vue du pré



Cour-jardin



Cuisine



Salle de bain n°2